



Cim50 Manufacturing

Sage Accredited Manufacturing Solution for Sage 50

Cim50
manufacturing

Cim50 - Desk 4U

File View Settings Tools Help

New Amend View Copy Trial Kitting Max. B

Columns Filter

Bom Reference	Description	Type
DRAW/M	Drawset - Mahogany	Sub-Assem
	Drawset - Oak	Sub-Assem
	Drawset - Pine	Sub-Assem
	Drawset - Teak	Sub-Assem
	Drawset - Walnut	Sub-Assem
	Universal Plywood Drawer Base	Sub-Assem
	Desk Leg Assembly	Sub-Assem
	Office Desk - Mahogany	Finished G
	Executive Desk - Mahogany	Finished G
	Office Desk - Oak	Finished G
	Executive Desk - Oak	Finished G
	Office Desk - Pine	Finished G
	Executive Desk - Pine	Finished G
	Small Business Customised Pack	Finished G
	Office Desk - Teak	Finished G
	Desktop - Mahogany	Sub-Assem
	Desktop - Oak	Sub-Assem
	Desktop - Pine	Sub-Assem
	Desktop - Teak	Sub-Assem
	Desktop - Walnut	Sub-Assem
	Executive Desk - Walnut	Finished G
	Office Desk - Walnut	Finished G

Swap Clear Refresh Ex

Shop Floor Data Capture

Cim50 Company: Desks 4U Limited v2023 Current User: Martin Conner Shop Floor Data Capture Version: 2023.1.0.0

Stocktake

Stock Code: TIMB/OAK
Description: Timber - Oak Veneer - 6 metre
Batch Number: TO-0057
Location: C6
Expected Quantity: N/A
Count Qty: 21

Additional Info

Order Reference: 12 Date Received: 06/03/2023
Account Reference: 1041 Sell By Date: 06/03/2023
Account Name: The Local Timber Co., Ltd. Use By Date: 06/03/2023
Supplier Batch: 1846316-2023
Supplier Certificate:
Notes:

Confirm Cancel

Contents

What is Cim50?	3
Module Overview	4
Benefits of Cim50	5
Stock Control	6
Bill of Materials	10
Works Orders	14
Planning	19
Quotations	24
Shop Floor Data Capture	28
Graphical Scheduler	33
Customer Experience & Business Partners	35
Migration & Deployment	36
Support & Training	37
Who are CIM Software?	38
Contact Information	39

What is Cim50?

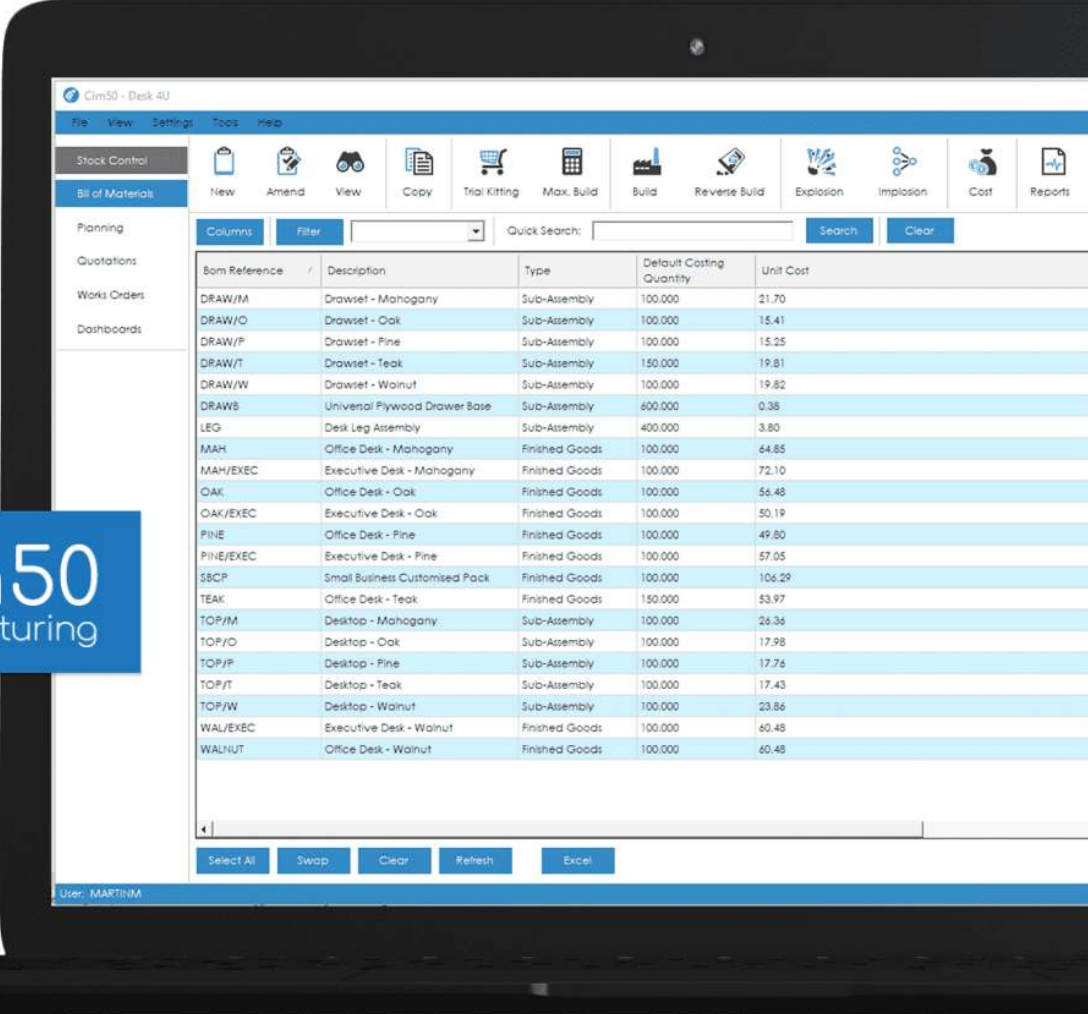
Cim50 is a fully-integrated, comprehensive manufacturing software for Sage 50 Accounts and is Sage's recommended replacement for Sage 50 Manufacturing.

It's specifically designed for small to medium manufacturers and can be used by a single user up to 20 users in total.

The streamlined functionality available throughout the system is designed to enable small manufacturers to focus on their manufacturing activity, not on the overhead of having to maintain a complex manufacturing system.

It's a modular solution and there are 7 comprehensive modules available to choose from: **Stock Control**, **Bill of Materials**, **Works Orders**, **Planning**, **Quotations**, **Shop Floor Data Capture** and a **Graphical Scheduler**. Businesses can flexibly select the modules they require and create a software that works in the way that they work.

Cim50 is trusted by 2500+ users across a variety of manufacturing verticals in the UK and Ireland.



The screenshot displays the Cim50 software interface. On the left, a navigation menu lists modules: Stock Control, Bill of Materials (selected), Planning, Quotations, Works Orders, and Dashboards. The main window shows a table of Bill of Materials (BOM) items. The table has columns for Bom Reference, Description, Type, Default Costing Quantity, and Unit Cost. Below the table are buttons for 'Select All', 'Swap', 'Clear', 'Refresh', and 'Excel'. A user name 'User: MARTINM' is visible at the bottom left of the interface.

Bom Reference	Description	Type	Default Costing Quantity	Unit Cost
DRAW/M	Drawset - Mahogany	Sub-Assembly	100,000	21.70
DRAW/O	Drawset - Oak	Sub-Assembly	100,000	15.41
DRAW/P	Drawset - Pine	Sub-Assembly	100,000	15.25
DRAW/T	Drawset - Teak	Sub-Assembly	150,000	19.81
DRAW/W	Drawset - Walnut	Sub-Assembly	100,000	19.82
DRAWB	Universal Plywood Drawer Base	Sub-Assembly	600,000	0.38
LEG	Desk Leg Assembly	Sub-Assembly	400,000	3.80
MAH	Office Desk - Mahogany	Finished Goods	100,000	64.85
MAH/EXEC	Executive Desk - Mahogany	Finished Goods	100,000	72.10
OAK	Office Desk - Oak	Finished Goods	100,000	56.48
OAK/EXEC	Executive Desk - Oak	Finished Goods	100,000	50.19
FINE	Office Desk - Pine	Finished Goods	100,000	49.80
PINE/EXEC	Executive Desk - Pine	Finished Goods	100,000	57.05
SBCP	Small Business Customised Pack	Finished Goods	100,000	106.29
TEAK	Office Desk - Teak	Finished Goods	150,000	53.97
TOP/M	Desktop - Mahogany	Sub-Assembly	100,000	26.36
TOP/O	Desktop - Oak	Sub-Assembly	100,000	17.98
TOP/P	Desktop - Pine	Sub-Assembly	100,000	17.75
TOP/T	Desktop - Teak	Sub-Assembly	100,000	17.43
TOP/W	Desktop - Walnut	Sub-Assembly	100,000	23.86
WAL/EXEC	Executive Desk - Walnut	Finished Goods	100,000	60.48
WALNUT	Office Desk - Walnut	Finished Goods	100,000	60.48

Cim50
manufacturing

The Cim50 Modules

Our modules fully integrate with Sage 50 Accounts to enhance your manufacturing processes. Only pay for the modules you need and scale up and down as your business evolves.



Stock Control

Enhance Sage 50 with Advanced Stock Capabilities & Streamlined Processing



Bill of Materials

Utilise Multi-Level Bill of Materials with Detailed Costing & Audit Functionality



Works Orders

Manage Production Processes, Work in Progress & Resource Capacities Efficiently



Planning

Deliver Just In Time Planning to Meet Deadlines, Reduce Stock Holding & Improve Cashflow



Quotations

Maximise Profitability with Accurate Costings when Quoting Manufactured Items



Shop Floor Data Capture

Use the Power of Barcoding to Improve Accuracy & Efficiency Across All Processes



Graphical Scheduler

Visualise your Production Schedule and Control your Shopfloor Workload with an Easy-To-Use Interface

The Benefits of Cim50

Just some of the benefits of the Cim50 Manufacturing software solution...



Increased efficiency. Cim50 streamlines data entry, provides powerful MRP recommendations and automates admin tasks.



Reduced costs. With improved efficiency throughout the whole system, save on billable hours and reduce your waste production.



Improved visibility. Make better business decisions with complete visibility of all of your manufacturing processes in real time.



Enhanced customer satisfaction. Ensure products are consistently made on time and meet all quality standards.



Strengthened collaboration. With financials and manufacturing modules in one place, improve the synergy between departments.



Improved accuracy. All additional manufacturing settings and fields are integrated into Sage 50, avoiding the need for double entry.



Ease of use. Cim50's design is familiar to Sage 50 Accounts users and has powerful functionality and easy to understand reporting.



Stock Control

Enhance Sage 50 Accounts with Advanced Stock Capabilities & Streamlined Processing

With Cim50's Stock Control module, ensure your business' stock is kept up to date in real time and fully integrated with the Sage 50 Products module. Track and maintain all of the items you buy, sell or manufacture.

This module mirrors the available fields within Sage 50 Accounts, giving you one screen to maintain your stock records.

Key functionality includes:

- Traceability
- Stock Profile
- Stocktake
- Quarantine
- KPIs & Dashboards
- Audit Log

NOTE: The Cim50 Stock Control module is the only compulsory module within the system and underpins the rest of the manufacturing solution.

Key Functionality in our Stock Control Module

Track Stock Movements of Items you Sell, Buy or Manufacture

Process all transaction types from one integrated system including receipt of goods, despatching finished items and stock adjustments.

Ensure Full Batch & Serial Number Traceability

Track all batch and serial number movements, showing a detailed history and costing breakdown across the manufacturing process.

Maintain Stock Items in One Easy to Use Interface

Utilise the available fields in the Sage 50 Accounts Products along with additional Cim50 Stock Control fields with all amendments recorded.

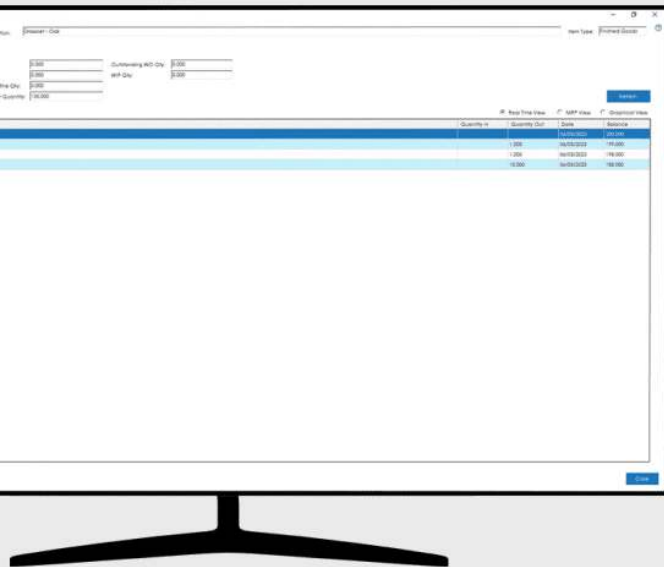
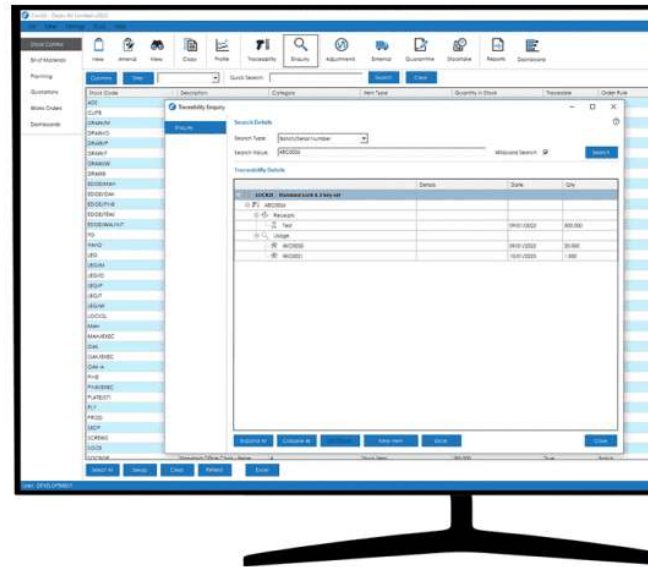
Traceability

Cim50's traceability functionality allows you to track all batch and serial number movements throughout the system.

Goods Receipt – Record batch/serial numbers on items received into stock from a purchase order.

Production – Allocate and issue traceable components to BOM builds or works orders and generate batch/serial numbers for manufactured items.

Goods Despatch – Record batch/serial numbers on items despatched to customers.



Stock Profile

With the Stock Profile, see a complete overview of your stock position for an item.

From one screen you can see your current stock position, what orders are awaiting receipt from suppliers or works orders, what outstanding customer orders are on the system, what stock is in quarantine, giving you all the information you need to make an informed decision.

Real-time and planning projections are also available, showing the expected position of stock into the future.

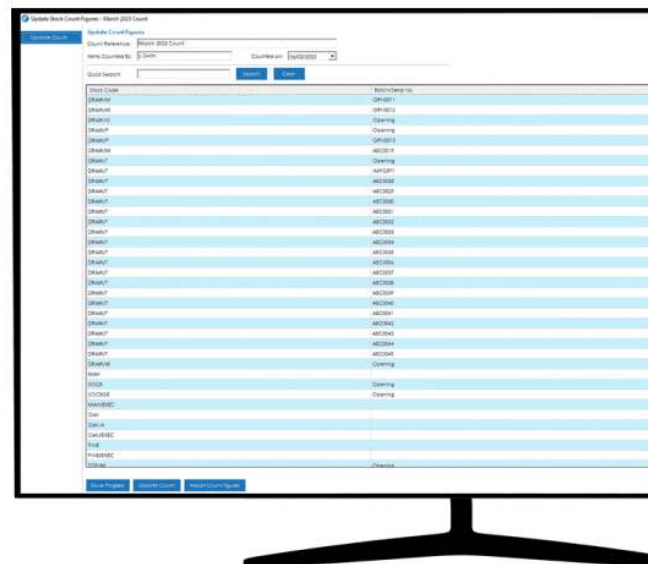
Stocktake

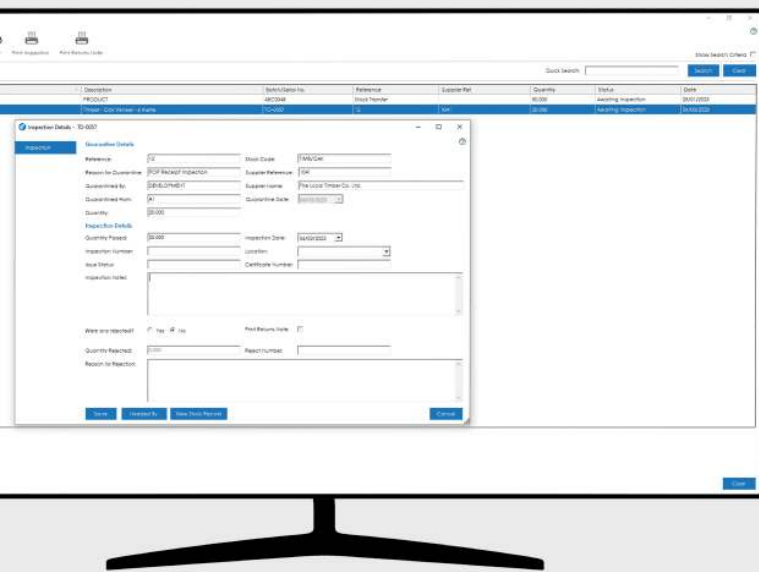
Count all items or a subset of items based on location, last usage date, value or any other filter you wish to apply.

Whilst a stocktake is in process, you can prohibit all stock transactions throughout the system for items effected by that stocktake.

You can process a stocktake in one of 3 ways.

- Utilise the Cim50 SFDC module to scan barcodes and directly enter count figures into the tablet or scanner.
- Export your count sheets to Excel, which can be amended and then reimported to update count figures.
- Print manual count sheets which can be filled in and then entered back into Cim50 directly.





Quarantine

Quarantine enables the inspection of goods that have been placed into quarantine during receipt into stock or transferred via adjustments.

View and inspect these items, with stock being released to available stock or written off, with the ability to print supplier returns notes if required.

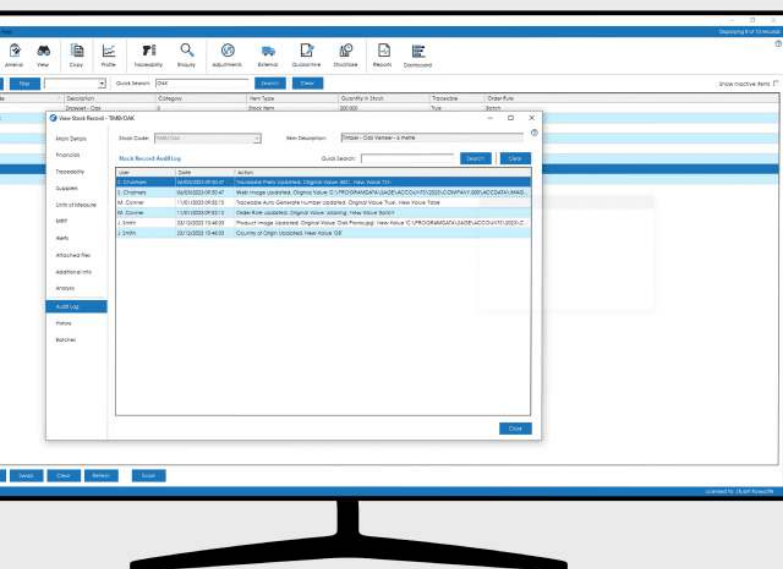
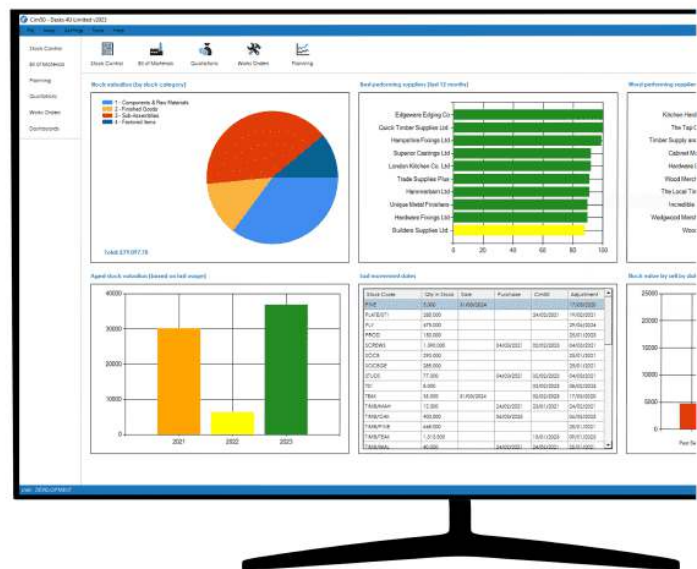
Inspection records are retained indefinitely, and either recorded against the batch/serial number or stock record.

KPIs & Dashboards

Monitor key indicators for your stock, including supplier and despatch performance with cost variances, in one easy to view enquiry screen.

Utilise the dashboard functionality to see stock valuation breakdowns, by product group, last usage date and sell by/use by date.

Enquiries for best and worst performing suppliers based on OTIF targets are available.



Audit Log

The Cim50 Audit Log records any change made to the static data associated with a stock record.

From minor value changes to additional suppliers and units of measure, everything is captured.

Export the audit log to Excel for further analysis.

Changes recorded in Sage 50 do not go unnoticed, with the Cim50 integration identifying changes made in Sage 50, updating Cim50 accordingly and recording the change in the audit log.

Additional Stock Control Features

Alternative Suppliers

Setup multiple alternative suppliers for an item, recording supplier part number information, cost price and lead time against each.

Utilise the supplier price breaks functionality to define discounted prices based on purchase quantity.

Multiple Units of Measure

Define multiple units of measure against an item and utilise the item in any unit of measure through the Cim50 system.

Amend Goods Receipt

Cim50 gives you the ability to reverse a purchase order receipt, removing the receipted items from stock and putting them back on order on the PO. Allowing you to easily correct data entry issues.

Certificates of Conformity

Produce Certificates of Conformity from Cim50 utilising the conformity information available on Cim50 stock records.

Alerts

Take advantage of the Cim50 alerts functionality, enabling users to be notified via a popup or in-screen of any pertinent information. The alerts functionality is available when receiving goods, despatching goods, carrying out BOM builds, when processing items through MRP, on quotations and works orders.

Despatch by Customer

Cim50 enables you to create despatch notes containing items from multiple orders for the same customer. Simply select the customer you wish to despatch goods to when creating a new delivery note and the system will display all outstanding orders for that customer.

Receive by Supplier

Cim50 enables you to receive goods from multiple purchase orders at the same time. Simply select the supplier you wish to receive goods from, and the system will display all outstanding orders for that supplier.





Bill of Materials

Utilise Multi-Level Bill of Materials with Detailed Costing & Audit Functionality

Configure your built items with advanced functionality that fully integrates with Sage 50 Accounts.

The Cim50 Bill of Materials module creates a digital representation of all of the necessary materials to manufacture products and their hierarchical relationships. This enables manufacturers to manage their inventory effectively, plan production schedules, and control costs.

Key functionality includes:

- Costing
- Trial Kitting
- Build
- Reverse Build
- Explosion/Implosion
- Max Build
- Audit Log

Key Functionality in our Bill of Materials Module

Track Ongoing Costing History For All Manufactured Items

Improve profitability by accurately calculating the cost of bill of materials including material, labour and machine overheads with full costing history.

Maintain Bills of Materials With Unlimited Components & Levels

Configure your built items to meet all necessary manufacturing specifications, no matter the complexity or number of components.

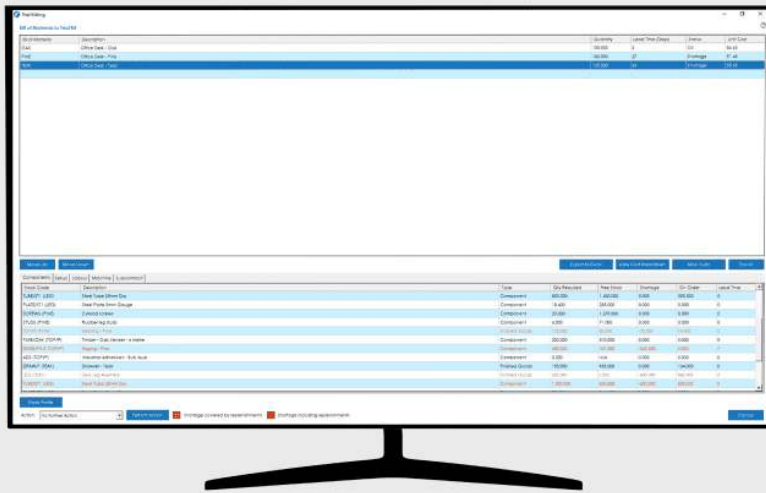
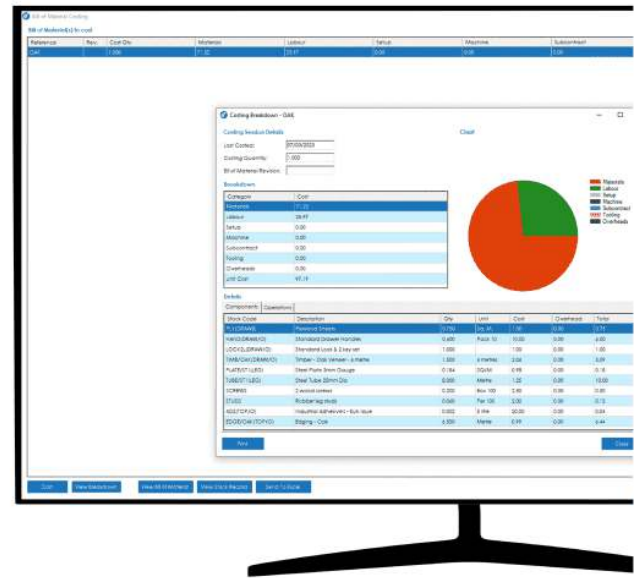
Ensure Shortages Are Fulfilled With Trial Kitting & Built Items

Verify there is enough stock to assemble multiple bill of materials, review machine & labour requirements and record built items.

Costing

With Cim50 Bill of Materials, take advantage of ongoing costing history, giving you the confidence that your build and purchase costs are accurate. Visualise your exact costing breakdown using the on-screen chart.

Calculate the cost of building your bill of materials, including material, labour, setup, machine and overheads costs.



Trial Kitting

Trial Kitting provides you with an overview for the items you may wish to build, checking for shortages.

Easily raise works orders and purchase orders for several jobs, ensuring manufacturing and purchasing costs are most efficient.

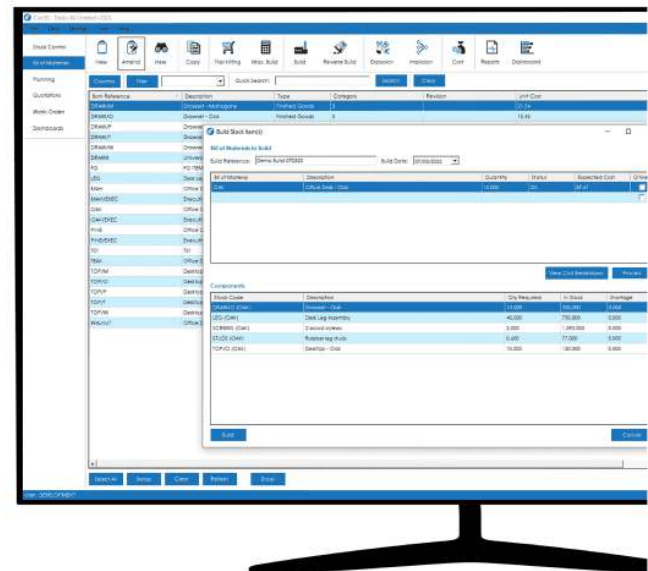
View labour, machine, setup and subcontract requirements for complete transparency.

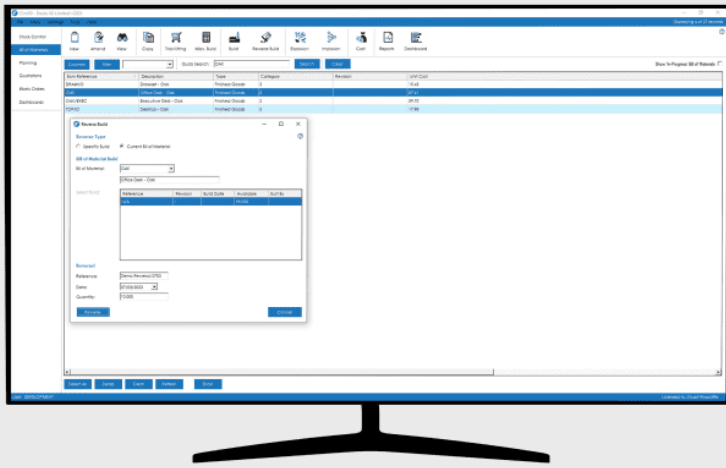
Build

Carry out BOM builds to quickly transfer component items out of stock and transfer the finished goods into stock.

Build multiple items simultaneously, with common components being considered when calculating any potential shortages.

Finished items are booked into stock with production costs included.





Reverse Build

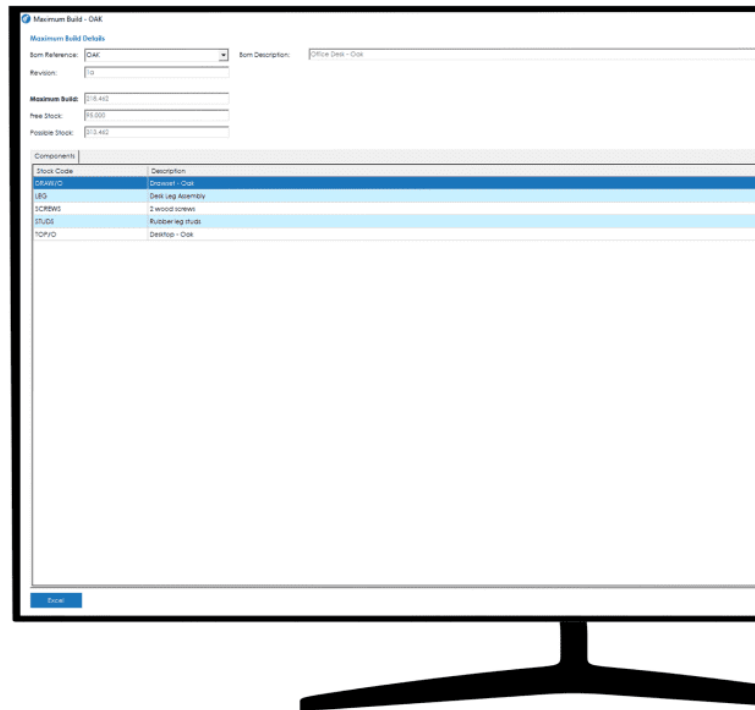
The Cim50 reverse build functionality enables you to easily reverse a specific processed BOM build, or disassemble the finished item based on the current bill of material components.

Explode your components back into stock with accurate costs, allowing for variances and the possibility that not all components could be reserved into stock.

Max Build

Utilise the Cim50 Maximum Build functionality to quickly and easily see how many of a finished item or sub-assembly you could produce based on current stock figures.

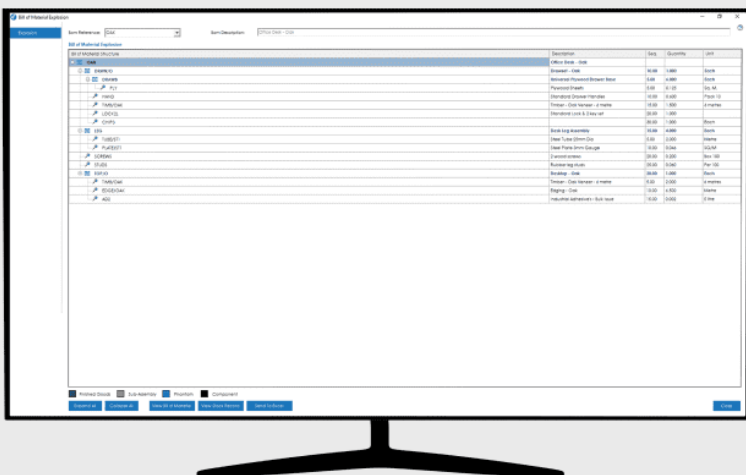
The system can calculate 2 maximum build quantities for a manufactured item. The first assuming you only consumed stock that is currently available, or, alternatively it can calculate the maximum build quantity assuming you were to build sub-assembly items based on their own component availability.

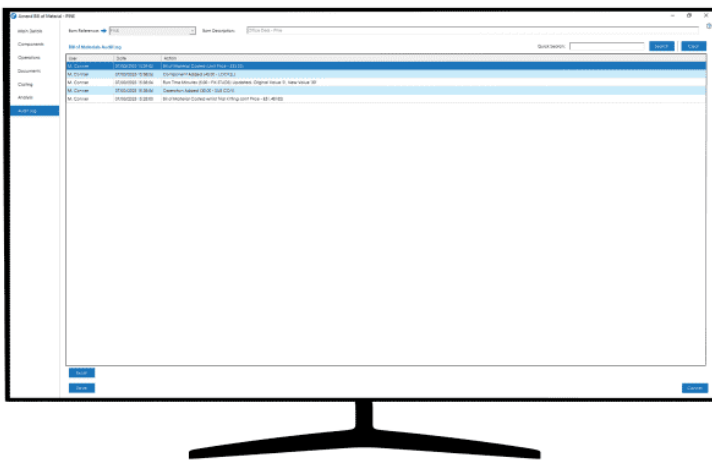


Explosion/Implosion

View a complete breakdown of the sub-assemblies and component items required for a finished product, presented in an easy to read tree-grid view.

Similarly, implode a component item to explore which assemblies it is used within. Drill in to further information for greater visibility.





Audit Log

With Cim50 Bill of Materials, the audit log allows you to check for amendments and ensure your BOMs are accurate. Track any changes made and by whom, with the option to search for specific amendments. Export the audit log to Excel for further analysis.

Additional Bill of Materials Features

Operation Components

Assign components to a relevant operation and print on the appropriate paperwork to ensure components are only allocated when needed. Furthermore, the Planning module will ensure associated components are available just-in-time for the start of the operation, rather than the start of the job itself, useful for jobs that span a long period of time, where some components are not needed until the latter stages.

Subcontract Costing

Setup BOMs with multiple sub-contract suppliers. Define price/quantity breaks and subcontract process times. Accurate costing ensures the finished item cost includes the costs for any subcontract processes.

Drawings & Attachments

Cim50 includes a comprehensive Drawings Register, which can then be associated with one or more BOM and subsequently appearing on associated WO. You can also attach any document type to a BOM, which again will appear on any associated WO created from the BOM. These drawings/attachments can then be opened directly from the BOM or WO in Cim50.

Resources

Define multiple labour, machine and tool resources in the resources register and utilise those resources on BOMs. Flexibility on the BOM enables you to configure the resource times and costs against each operation, allowing for accurate costing and production planning.

Operations

Define multiple in-house or subcontract operations on a BOM. Configure the operation to include operator instructions, expected processing times and costs.

Reporting & Dashboards

Utilise the standard reports and dashboards to see build volumes and values by week, where BOMs have higher costs than suggested selling prices along with component where used reports and costing analysis.

Archive

Archive BOM functionality enables you to keep your live data tidy whilst retaining historical BOM information, which can be reinstated should an obsolete item become active again.

Unlimited Components & Levels

Ability to create multiple level BOMs with unlimited components.



Works Orders

Managing Production Processes, Work in Progress & Resource Capacities Efficiently

Follow the 'build' on the shop floor with amendable documentation, detailing the quantities of components required, which operations are needed and when.

This enhanced module allows you to raise, progress and track your works orders throughout the entire production process. Cim50 Works Orders provides easy-to-use interfaces and enquiry screens allowing you to have confidence that your jobs are being completed on time, on spec and within budget.

Key functionality includes:

- Work in Progress
- Shop Floor Documentation
- Capacity Planning
- Subcontracting
- Costing
- One Off Works Orders
- Carbon Emissions Calculator

Key Functionality in our Works Order Module

Analyse Estimated vs Actual Costs

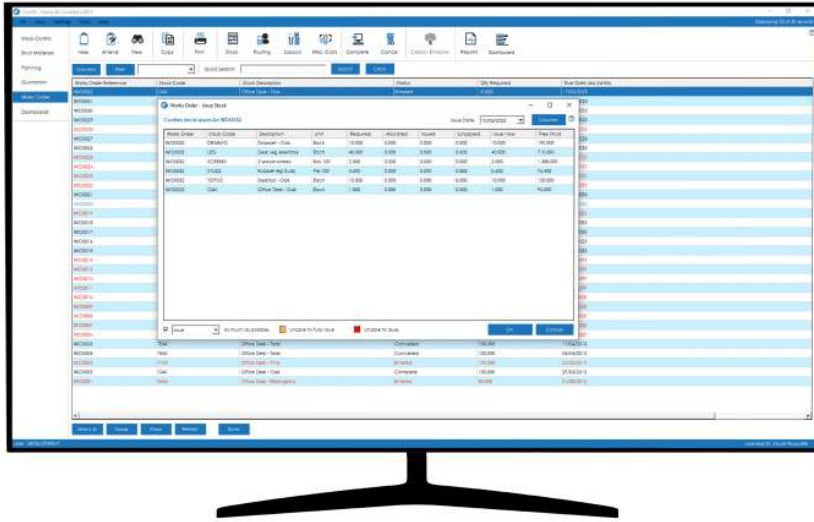
Ensure costs are accurate and remain within budget by tracking material, labour, machine, subcontract, tooling and overhead costs.

Track Production Across the Entire Manufacturing Process

Review rough cut resource availability and produce shop floor paperwork with detailed instructions and times.

Maintain Material Allocations and Work In Progress

Allocate and issue components to production to facilitate accurate stock holdings and comprehensive WIP reporting.



Work In Progress

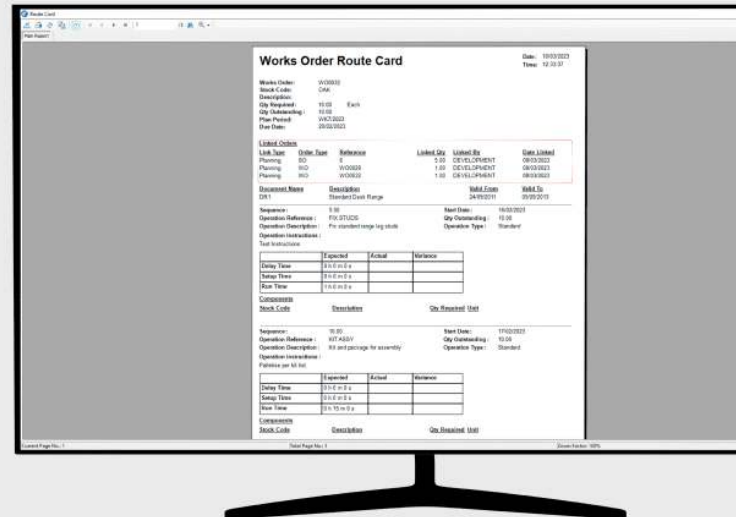
Allocate and issue component stock to works orders, book processing time to operations and despatch/receive subcontract processes.

Easily check the progress of a WO and run detailed WIP analysis reports.

Shop Floor Documentation

Cim50 includes 4 different shop floor documents by default, all of which are customisable and can be amended to suit your specific needs.

You can also produce in-progress and completion labels to stick on items as they are progressed through the production process.

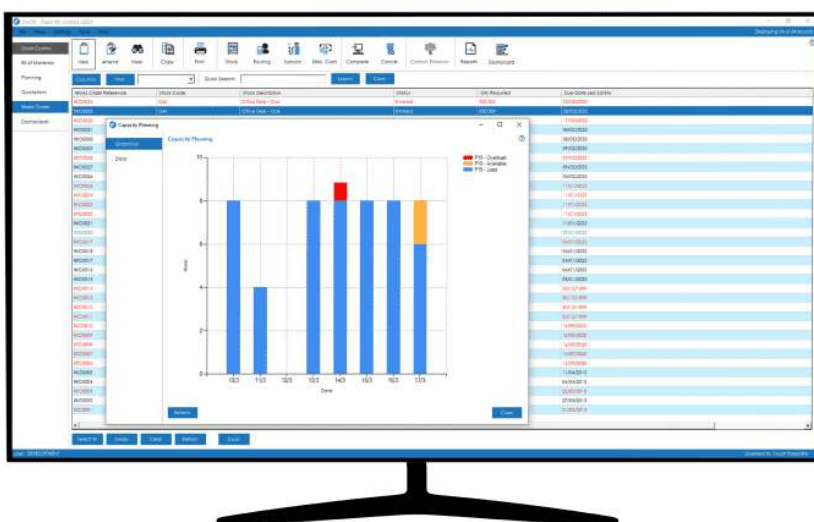


Capacity Planning

Cim50's Rough Cut Capacity Planning identifies resource availability and shortages.

Cim50 allows you to easily keep an eye on your shop floor loading with a powerful enquiry screen, detailing the hours required and used for your labour and machine resources.

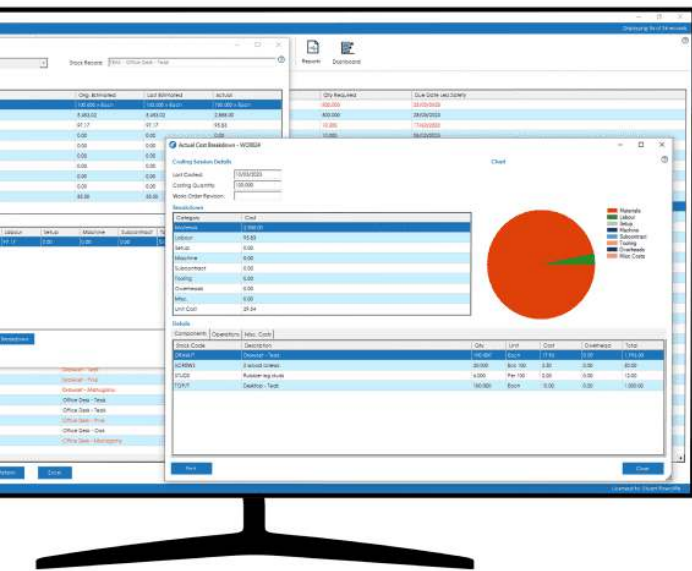
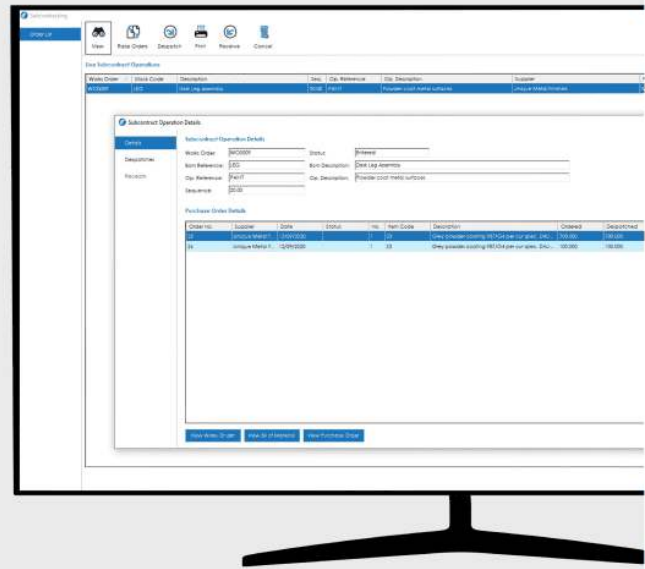
Export to Excel for data manipulation, which includes loading and availability for each resource, for each working day, in a selected period.



Subcontracting

Take advantage of advanced subcontracting functionality which allows you to control all subcontract processes. Raise purchase orders, despatch the goods to your subcontract supplier and receive them back within one easy-to-use screen.

Amend and confirm the receipt quantities, along with the supplier GRN number and notes you may wish to add against the receipt.



Costing

Cim50 provides simple to read overviews for production costs, and detailed breakdown screens for when you need to understand the makeup of your costs in more depth.

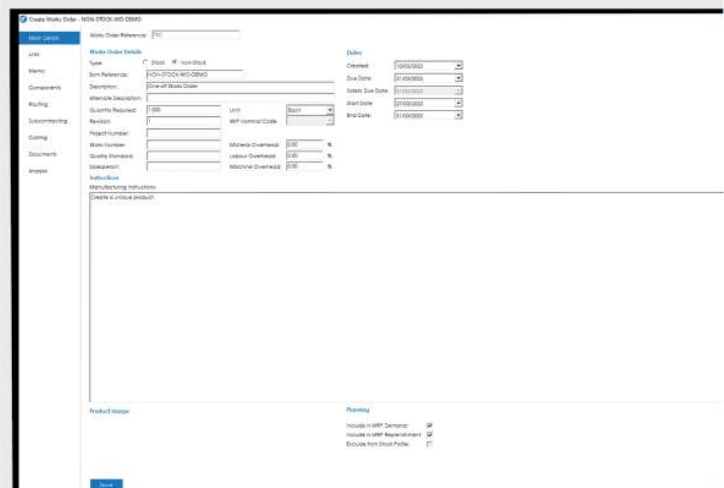
Every works order has an expected cost calculated at the point it is raised, and this expected cost can be refreshed at any point during the production process.

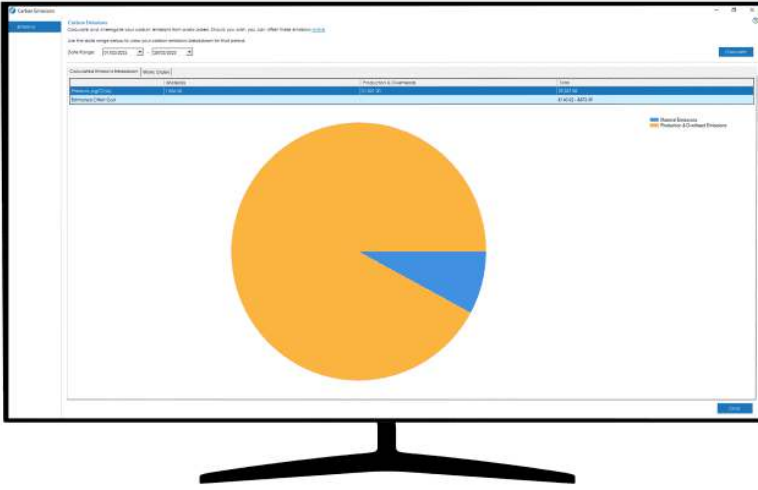
Actual costs are tracked and updated in real-time with reporting versus expected.

One Off Works Orders

If you produce one-off/bespoke items, you can utilise Cim50's one-off works order functionality, generating a works order for a one-off, non-stocked product.

Allocate components and operational processes to the job and process, utilising the same tools available for stocked/repeat works orders.





Carbon Emissions

Utilise the Cim50 Carbon Emissions dashboard to interrogate your emissions over a defined period, showing which works orders and/or machines contributed to your total carbon emissions for a selected period.

You can also offset your emissions with the click of a button, redirecting you to a variety of offset providers who you can sign up with to offset your carbon emissions.

Calculate your Carbon Footprint with Cim50

Calculate the carbon emissions generated from your manufacturing processes through two different modes; simple and complete.

- **Simple Mode:** Input the types of fuel you are using, the quantity and the timeframe, as well as the carbon footprint of your purchased items from your suppliers.
- **Complete Mode:** Enter: fuel usage and type against your production machinery, details of your vehicle fleet (including annual mileage, fuel type and emissions data), total fuel bills for a time period (the system will work out the proportion for the item) as well as the carbon footprint of any materials from suppliers.

Then, from the Cim50 Carbon Calculator Dashboard, view your carbon footprint on a month by month basis and see which products have the highest carbon footprint as well as which machinery and vehicles are costing the most.

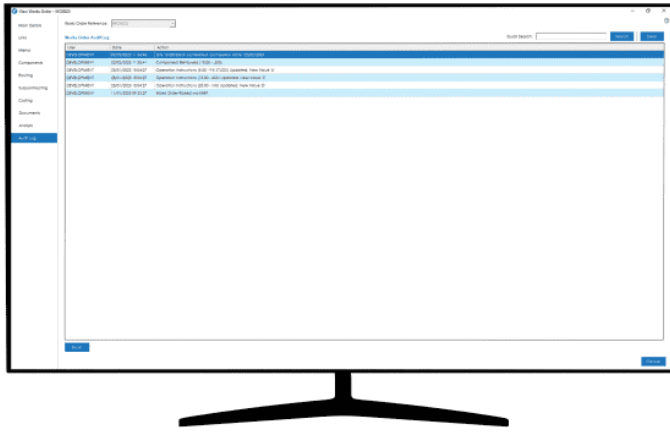


Work Order ID	Description	Quantity	Start Date	End Date	Resource
W001	Task description	100	2023-01-01	2023-01-31	Resource A
W002	Task description	200	2023-02-01	2023-02-28	Resource B
W003	Task description	150	2023-03-01	2023-03-31	Resource C
W004	Task description	300	2023-04-01	2023-04-30	Resource D
W005	Task description	250	2023-05-01	2023-05-31	Resource E
W006	Task description	180	2023-06-01	2023-06-30	Resource F
W007	Task description	220	2023-07-01	2023-07-31	Resource G
W008	Task description	120	2023-08-01	2023-08-31	Resource H
W009	Task description	350	2023-09-01	2023-09-30	Resource I
W010	Task description	100	2023-10-01	2023-10-31	Resource J

Work To List

The Work To List provides you with a complete overview of the outstanding tasks for each labour and/or machine resource by works order operations start dates.

Enabling you to schedule jobs for maximum efficiency and provide visibility to the shop floor.



Audit Log

With Cim50 Works Orders, the audit log tracks any changes made and by whom, with the option to search for specific amendments.

Export the audit log to Excel for further analysis.

Additional Works Orders Features

Labour Bookings

Book labour time to works orders via timesheets, operation time bookings or via barcodes utilising the Shop Floor Data Capture module.

Miscellaneous Costs

Book unexpected miscellaneous costs to a works order through an easy-to-use interface, with invoices being posted to supplier accounts where required.

Trial Kitting

Trial Kit multiple works orders simultaneously to quickly identify component shortages. Easily raise works orders and purchase orders for those shortages, ensuring manufacturing and purchasing costs are most efficient.

Scrap

Utilise scrap functionality to scrap components from work in progress, with the option to re-issue the scrapped items if required. If the finished item was not of sufficient quality, you can remake the finished item and choose to either amend the works order quantity on the job the item was produced from or raise a new works order to replace the scrapped items.

Quarantine

When completing items on works orders, you have the option to book the completed items into quarantine for inspection prior to being released to available stock.

Archive

Utilise the Archive WO functionality to archive old works orders, retaining the information for review at a later date if required, whilst keeping the live works order list neat and tidy.

Reverse Completions

Cim50 gives you the ability to reverse a works order completion, removing the receipted items from stock and putting them back on order on the works order. Allowing you to easily correct data entry issues.

Nominal Integration

Post material issue costs, labour, machine & overhead bookings through to work in progress. On completion of a works order there is the option for cost of sales postings.



Planning

Delivering Just in Time Planning to Meet Deadlines, Reduce Stock Holding & Improve Cashflow

This module is key to controlling your stock and ensuring goods are manufactured in time to despatch to your customers.

The Cim50 Planning module:

- Reads demand from sales orders, sales forecasts, works orders and make to stock items
- Maintains stock levels based on reorder levels, maximum stock level and other settings within the stock record
- Allows users to action combined or single recommendations to raise purchase orders and works orders
- Suggests cancelling or rescheduling orders that are no longer required or can be used to satisfy another demand
- Automates both MPS and MRP, at a convenient time for your business, with user-specified default settings
- Outputs easy-to-read logs detailing reasons for recommendations with historic logs

Key Functionality in our Planning Module

Ensure Demand is met from across Sage 50 and Cim50

Cim50 Planning reads from sales orders, sales forecasts, works orders, reorder levels and make to stock to verify that demands can be satisfied.

Track Shortages and Replenishments

Identify purchase and manufacture recommendations based on current demand versus stock on hand and outstanding orders.

Improve Cashflow with Rule Based Recommendations

Set up individual stock items with pre-requisites such as reorder rules and lead times to only buy and manufacture what you need, when you need it.



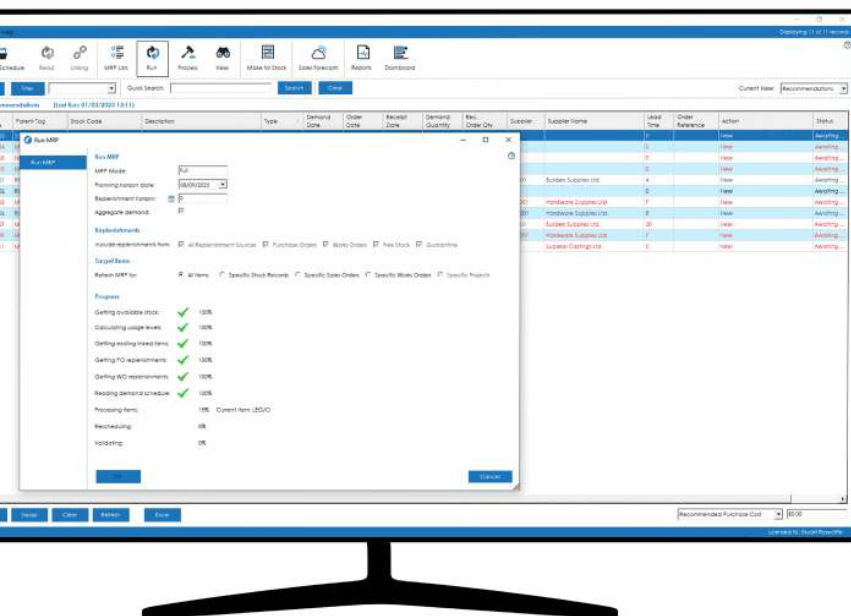
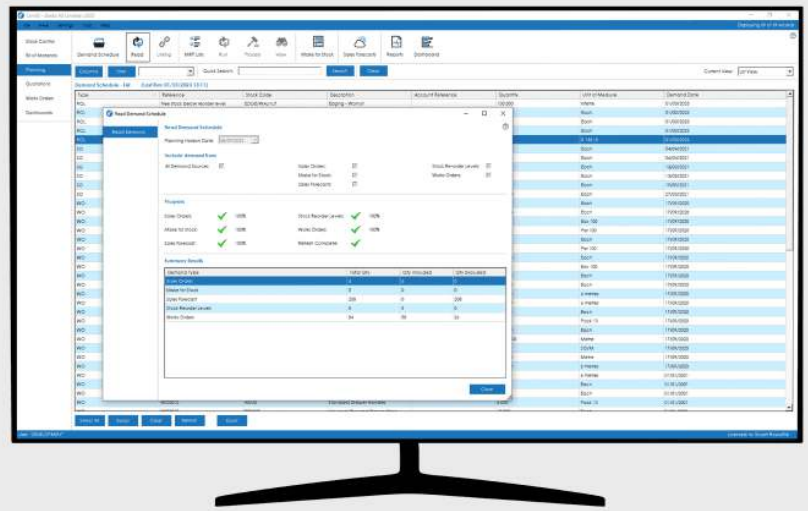
Just In Time

Cim50 is a “Just-in-Time” manufacturing system. The planning module recommends placing orders with suppliers and starting production so that they arrive exactly when they are needed, minimising your stock holding levels.

Demand Schedule

The Cim50 Demand Schedule is a complete list of all the demands that the MRP process will factor when calculating its recommendations.

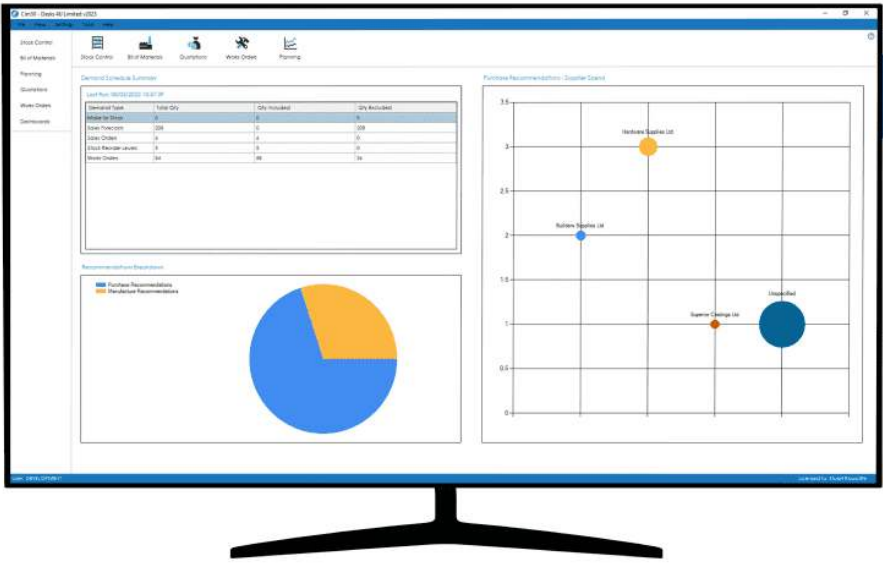
You can filter the items that are to be included in the demand schedule by type of demand, along with scheduling the demand schedule to process automatically out of hours if required.



Material Requirements Planning

MRP reads through all the demands on the demand schedule and then offsets available stock and replenishments against those demands to determine a list of demands that cannot currently be satisfied. It will then generate a list of rule-based recommendations to purchase components and manufacture sub-assemblies and/or finished goods in order to ensure all demands can be met.

To save rekeying data, recommendations can be actioned to create purchase orders in Sage 50 Accounts and WO in Cim50.



Dashboards

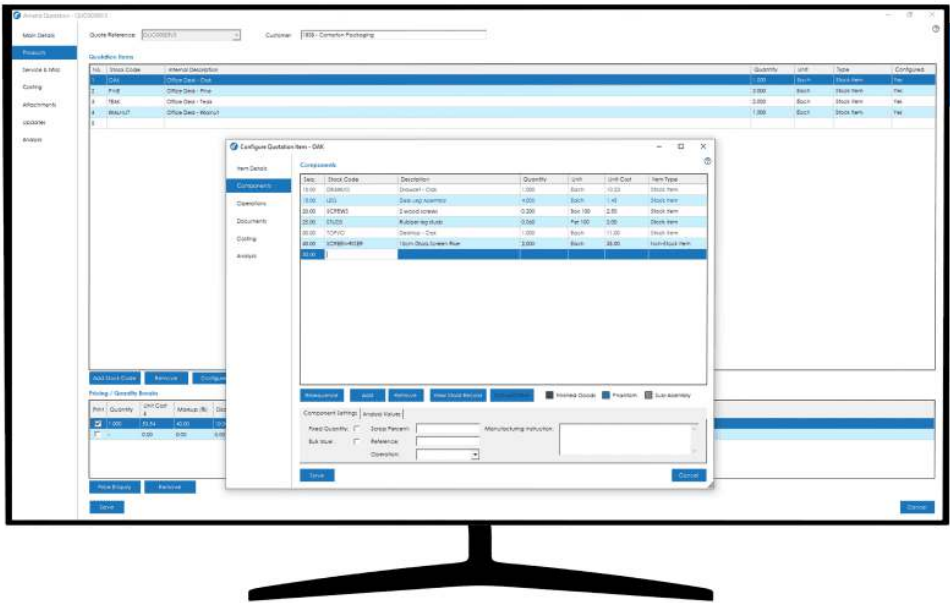
Utilise the dashboard functionality to see the summary from the latest demand schedule run, a breakdown of your MRP recommendations, along with a bubble chart showing suggested supplier quantity and spend.

Resource Calendar

Not all resources are available for the same amount of time each day, whether that be due to shift patterns, part time workers, or machine maintenance.

Cim50 enables you to define individual working calendars for each resource, with the system utilising those individual calendars to determine production planning times and completion dates.





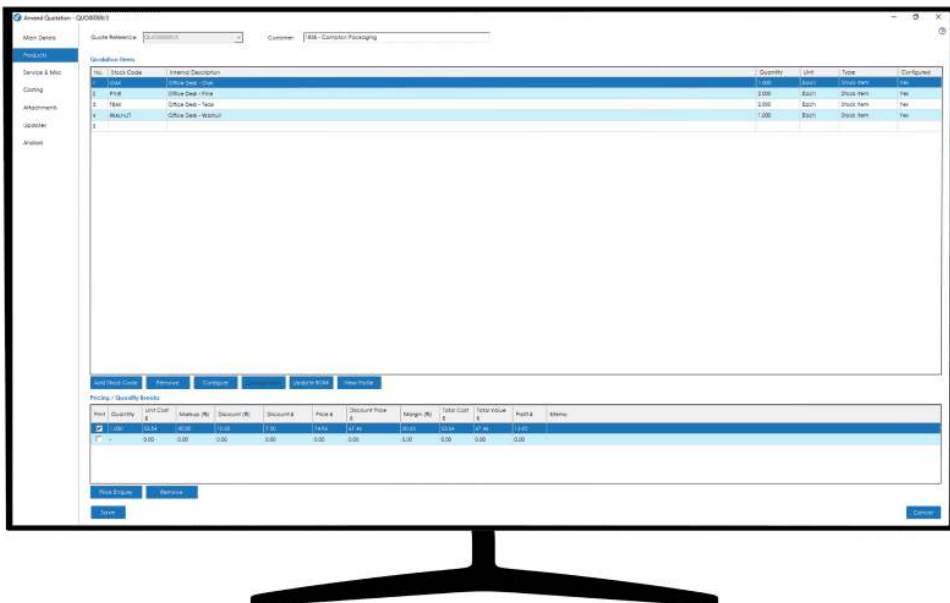
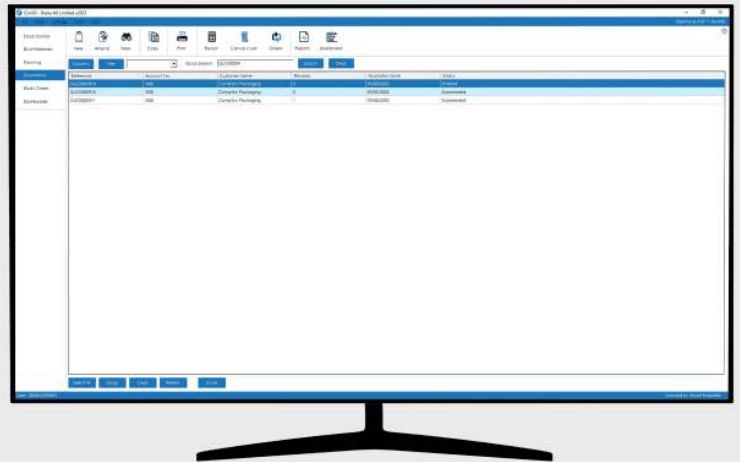
Configure Built Items

The Cim50 Quotations module enables you to configure the built item you're quoting for, whilst you're preparing the quotation for a customer or prospect.

Import an existing bill of material to amend or create a new one from scratch. Cost the configured item and ensure your profit margins are maximised.

Revision History

Utilise the revision history functionality to retain previous iterations of a quotation, making it available for review or reactivation if a customer or prospect decides to revert to an earlier version of the quote.



Products & Services

Ability to quote for stock and non-stock items, as well as items that don't currently exist in the system, with the ability to create the stock items as required when the customer or prospect places the order

Set up service and miscellaneous items on your quotes for repeat use.

Additional Quotations Features

Quantity Breaks

Define multiple quantity breaks on your quotations, with the system calculating the associated production costs based on each quantity quoted.

Discounting

Define individual discount rates and/or values on each quantity break.

Pricing

Utilise Cim50's Quotation pricing matrix to determine how the system should determine the default selling price, giving you complete flexibility and control.

Prospect Quotes

Create quotations for prospects without having to set up a customer account. Should the prospect decide to proceed with the order, create the customer record in Sage 50 Account directly from the quotation.

Update BOM

Update Bill of Materials with changes made on a quotation at the touch of a button, cutting down on data entry time and general admin overhead.

Quotation Updates

Record pertinent updates against a quotation, such as a follow up phone call, email chaser or a general update regarding pricing etc.

Multi-Currency

Define quotations for customers or prospects in any currency setup in Sage 50 Accounts.





Shop Floor Data Capture

Using The Power of Barcoding to Improve Accuracy & Efficiency Across All Processes

Carry out all stock transactions and operation times using a barcode scanner. Streamline your production processes, stocktaking and resource management.

Cim50 can produce barcoded labels, as well as add barcodes to any documentation produced from the system.

In terms of scanning devices, any traditional handheld barcode scanners can be used with the Cim50 SFDC module. Wired or wireless can be used as long as they have an active connection to the machine which is running SFDC. Alternatively, a scanning device built into a rugged Windows tablet can be used instead.

Key functionality includes:

- Stock movements
- Goods receipt
- Despatch
- Stock Take
- BOM build

Key Functionality in our SFDC Module

Ensure Accuracy Across The Cim50 & Sage 50 Modules

Accurately carry out any stock movement from purchase order receipt to sales order despatch (and all movements in between) using a barcode scanner.

Maintain Efficient Production Processes and Stock Control

With the power of barcoding, allocate and issue stock to works orders, manage subcontract processes and complete items into stock.

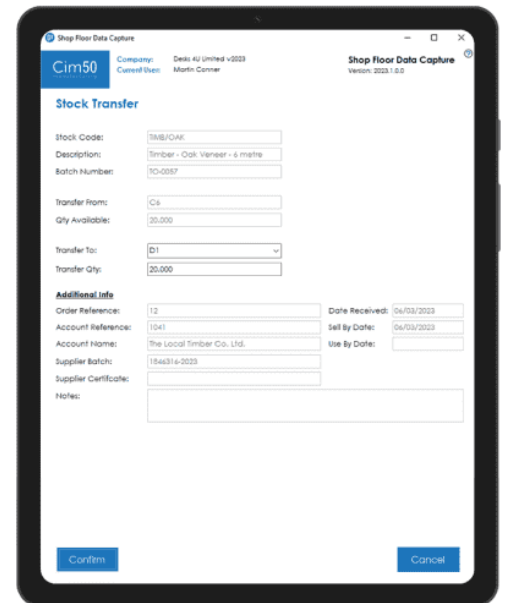
Track Labour and Machine Times Against Works Orders

Capture times for works orders operations and monitor employee productivity in real time to maintain manufacturing profitability.

Stock Movements

Process stock location transfers quickly and easily in Cim50 SFDC.

Scan the item's barcode, tell the system where you're moving the item to and confirm.



Goods Receipt

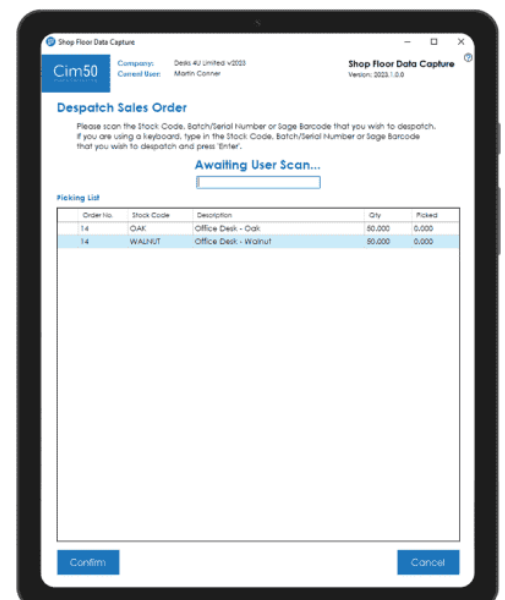
Process Sage 50 Accounts purchase order receipts using barcodes via Shop Floor Data Capture.

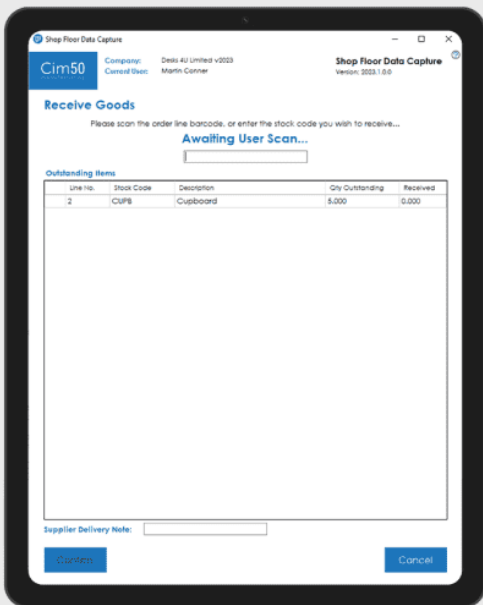
Scan your purchase order barcode to see an on-screen list of outstanding items. Then simply scan the barcodes on the items being receipted to book them into stock.

Despatch

Despatch goods against Sage 50 Accounts sales orders using barcodes via Shop Floor Data Capture.

Scan the items you want to despatch using the on-screen picking list and when complete, produce delivery paperwork directly to your local printer.





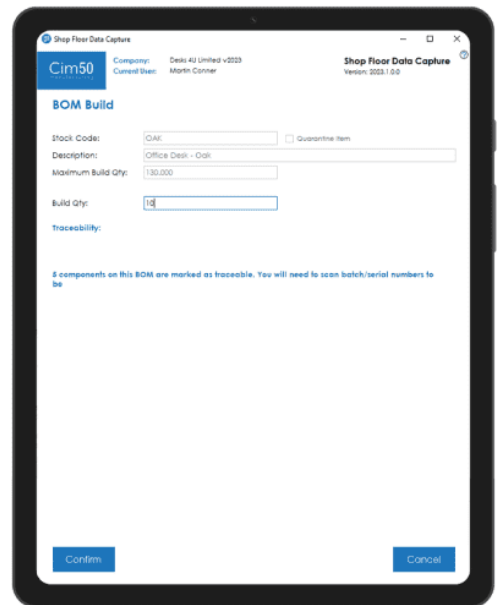
Stock Take

Efficiently process scheduled or ad-hoc stock counts using Shop Floor Data Capture.

Scan the item barcode you wish to count, enter the count figure and press confirm to update Sage 50 and Cim50 stock figures, including traceability.

BOM Build

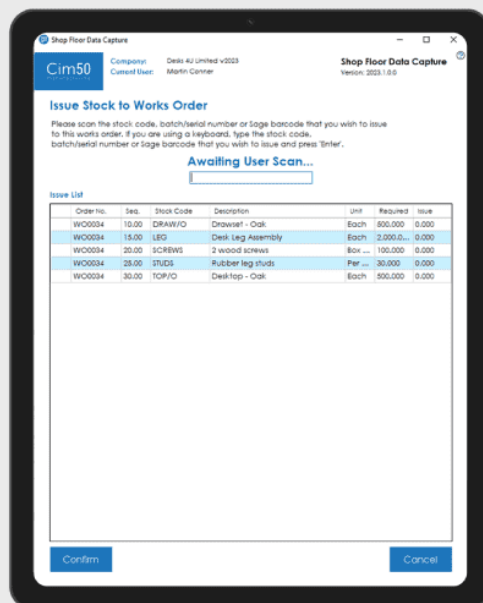
Process BOM builds via Shop Floor Data Capture to efficiently transfer component items out of stock and transfer the finished goods into stock.



Works Order Materials

Allocate and/or issue material components to works orders using barcodes, keeping work in progress up to date in real time.

Scan your picking list barcode, followed by the stock or traceable item barcodes you want to allocate or issue.



Additional SFDC Features

Quarantine Inspection

Process quarantine inspection and sign off via Shop Floor Data Capture. Scan the item's barcode and enter the inspection detail, pass and failure quantity and any other relevant info to record against the inspection.

Generate Purchase Orders

If you are running short of particular items, you can create supplier purchase orders directly from SFDC by simply scanning the barcode of the items you wish to order. This will then generate one or more purchase orders for the relevant suppliers of those scanned items.

Reverse BOM Build

The Cim50 reverse build functionality enables you to easily reverse a specific processed BOM build. Explode your components back into stock with accurate costs, allowing for variances and the possibility that not all components could be reserved into stock.

SFDC Live Monitor

Monitor current work in progress in real time using the Cim50 SFDC Live Monitor. See what shop floor operators are currently working on along with what operations have recently been completed.

Works Order Scrap

Utilise scrap functionality to scrap components from work in progress, with the option to re-issue the scrapped items if required. If the finished item was not of sufficient quality, you can remake the finished item and choose to either amend the works order quantity on the job the item was produced from or raise a new works order to replace the scrapped items.



Graphical Scheduler

Take Control of your Production Planning. *Intuitive, cost-effective, integrated.*

Visualise your production schedule and control your shopfloor workload with our intuitive and easy to use interface. Simply drag and drop...

Our Graphical Scheduler is a visual representation of a scheduling system that displays processes on a timeline to aid in planning and managing of production activities.

The Scheduler draws its data directly from Cim50 Manufacturing, allowing the production plan to be reviewed and manipulated, providing 'What if' functionality before committing back to Cim50.

The Graphical Scheduler, integrated within Cim50, is:

- Device Agnostic
- Web-Enabled
- Locally Hosted

It also has multi-user functionality.

Key Functionality in our Graphical Scheduler

Utilise Your Resources

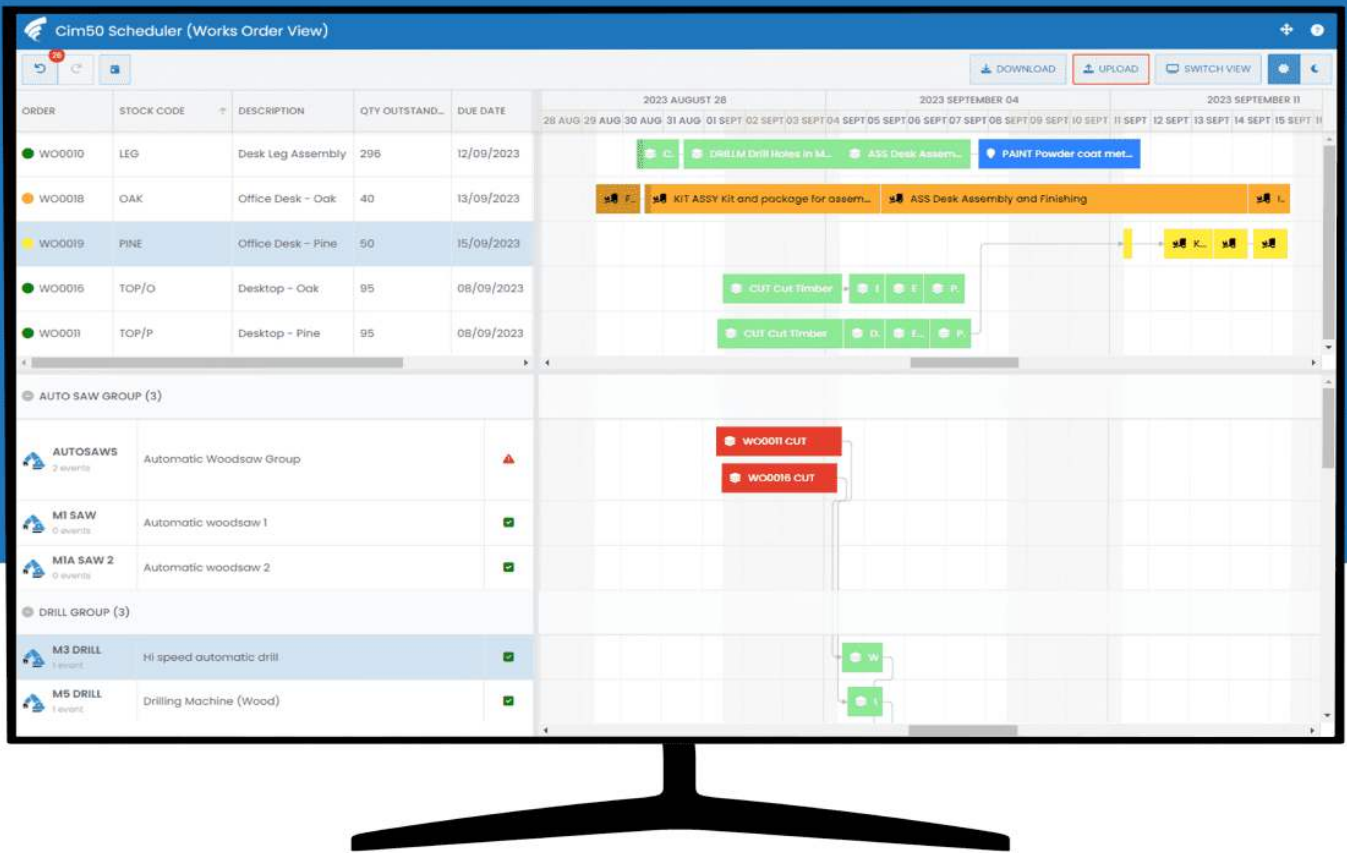
Group your resources and schedule production based on the capacity and availability of labour resources, machine resources or both.

Easily Control Your Production

Quickly see shopfloor workload and take control of your production plan to improve your manufacturing efficiency.

Prevent Resource Conflicts

Predict and resolve future resource conflicts and overloads to optimise the production plan to meet customer demands.



Conflict Management

Resolve machine and labour resource conflicts in real-time. Conflicts are highlighted for user review and affected operations can be drag-and-dropped to alternative times or resources.

Receive on the spot feedback as to whether the results of the user interaction will create further resource conflicts or the works order will become overdue or at risk of becoming overdue. If the changes don't work, there is the option to undo them, providing 'what if' functionality for production planners.

Works Order Planning

Schedule individual operations from the routings of the outstanding works orders present in Cim50.

The Works Order Planning view provides a complete overview of all works orders and their operations across the whole business. The system highlights late and at risk orders, as well as conflicting operations based on their: planned start dates, setup times, runtimes, delays and available capacity, ensures scheduling issues can be dealt with as soon as they are identified.

Resolve issues with works orders and operations to meet planning deadlines, before passing back the changes to Cim50 which updates your works orders.

Resource Utilisation

Review colour-coded utilisation of resources by percentage to get an understanding of overloads for labour and machine resources, factory load imbalances and where they occur. The resource utilisation view is based on the individual calendars and resource capacity, with option for grouping similar resources able to carry out the same tasks.

Customer Experience & Business Partners

Our Cim50 solution is trusted by 2500+ users in a variety of manufacturing verticals across the UK & Ireland.



“Cim50’s platform is state of the art and the flexibility of the software has helped us save time and money with our manufacturing. I would recommend CIM Software!”

-Mark, Managing Director at Chadburns

“Our business has expanded since Cim50 was introduced. Stock Control and order processing is now more streamlined, saving us time to focus on our customers and providing more accurate results.”

-Chloe, Office Administrator at EM Acoustics



Our Business Partners

We have a network of accredited Cim50 business partners located across the UK and Ireland. They are all Sage partners and able to provide the full Cim50 and Sage 50 Accounts package.

They have all undergone rigorous training and are also kept up to date with any changes to the software’s features or functionality. They are able to provide training and support for Cim50 as well as implement the entire system for you.



Migration & Deployment

Cim50 is Sage's recommended replacement for their Sage 50 Manufacturing solution which is now end of life. We have developed a seamless migration tool to help reduce the time and cost associated with implementing a new system.

Simply stop working in Sage 50 Manufacturing at an agreed time (typically a Friday evening) and your Cim50 consultant will then migrate your data to Cim50. This typically takes a couple of hours.

As soon as your consultant has confirmed its ready, you can start working in your new Cim50 system complete with all of your data and reports.

How does a typical migration project work?



Cim50 Deployment Options

Our Manufacturing MRP is an on-premise solution that is fully integrated with Sage 50 Accounts. If you don't have the infrastructure at your business needed to power the software, we can provide hosting as part of your monthly Cim50 package.

On Premise

Deploying Cim50 on premise requires a server, or standalone pc that will act as a server. Cim50 is then installed on each users' PC or laptop.

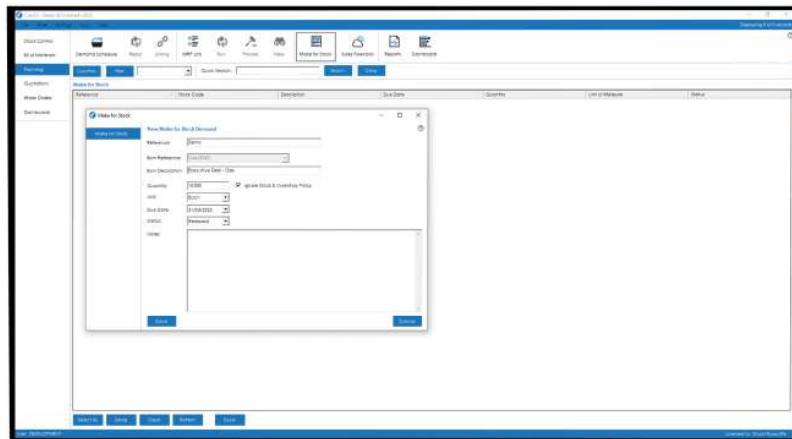
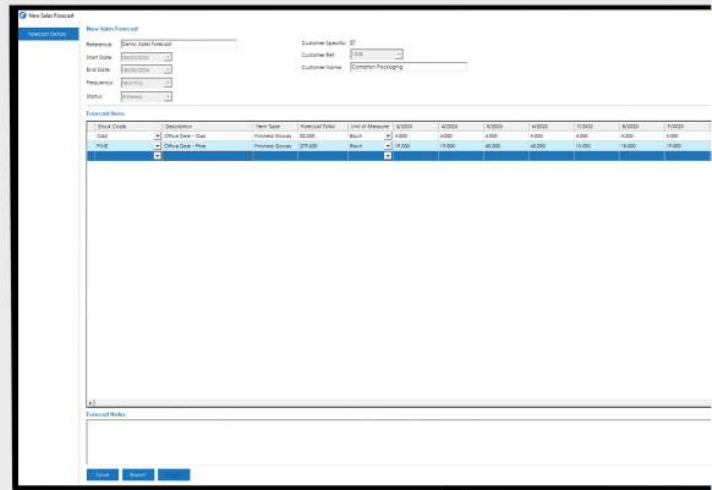
Hosting

You'll be provided a Cim50 Virtual Desktop via Microsoft's Azure Virtual Desktop platform. Hosting your Sage 50 and Cim50 systems provides you with access to both systems from anywhere you have an internet connection and negates the need for local hardware infrastructure.

Sales Forecast

Cim50 gives you the ability to create sales forecasts on a daily, weekly, monthly, or quarterly basis. Forecasts can be configured for specific customers or for any customer.

The planning system will read the sales forecasts and factor them into the calculations when considering upcoming demand and offset them.



Make To Stock

Cim50 Make to Stock demands allow you to create ad-hoc demands for items that the planning system will factor into its calculations and ensure you have the specified quantity of that item available in stock on the desired date.

Rescheduling

When the MRP process has completed its calculations, it will interrogate all existing replenishments on the system and determine if the date they are due to be received is still relevant, or if they are still needed at all.

If they are still needed but the due date on the demand they are needed for has changed, it will recommend rescheduling those purchase/works orders so that they are received just-in-time for the updated demand due date, freeing up your cashflow and avoiding stock being sat on a shelf for any longer than needed.



Additional Planning Features

Schedule Planning

Cim50's demand schedule refresh and MRP can be scheduled to run out of hours as and when needed.

Aggregating Demand

You can configure each stock item with individual aggregation settings, with options to aggregate by a specific number of days, by calendar week or calendar month. All demand that falls within those aggregate buckets will be combined, streamlining your MRP recommendations and ordering/production processes.

Supplier Minimum Spend

You can define minimum supplier spend figures in Cim50 and the planning system will warn you if a PO you are about to raise does not meet those minimum spend requirements.

Firm Planning Periods

Utilise firm planning periods to ensure that the planning system does not recommend altering production plans within a specified timeframe.

Overdue Demand/ Replenishments

The system can treat overdue demands and replenishments as expected to happen today, enabling the system to plan accordingly, whilst maintaining the ability to track KPIs for performance reporting and cutting down on potential admin overhead.

Tags & Links

Easily track and identify what replenishments will be used to satisfy which demands via the simple yet powerful tagging system. Convert tags to firm links if required at the touch of a button, so the planning system does not re-tag a replenishment unexpectedly.

Stock Profile

The Stock Profile screen is a powerful tool enabling you to see a complete overview of your stock position for an item at a given date.

From one screen you can see your current stock position, what orders are awaiting receipt from suppliers or works orders, what outstanding customer orders are on the system, what stock is in quarantine, giving you all the information you need to make an informed decision.

Furthermore, real-time and planning projections are available, showing you the expected position of stock into the future.

Safety lead times

Define individual purchase or production safety lead times within the MRP software to ensure you can meet your customer expectations regardless of any potential delays.

Define Make-To-Stock Items

Define make-to-stock items for specific dates and quantities.

Quotations

Maximising Profitability with Accurate Costings when Quoting Manufactured Items

With Cim50's Quotation module, integrated with Sage 50 Accounts, estimate costs and calculate total selling prices for manufactured items.

Create quotations for manufactured items, configured from within the record itself. This includes non-stock items, too.

Key functionality includes:

- Configure built items
- Revision history
- Products & Services
- Documentation
- Profit & Loss
- Order processing
- Quantity breaks
- Discounting
- Prospect quotes

Key Functionality in our Quotations Module

Track Multiple Revisions of Quotations In One Place

Copy quotations to track amendments from customers & prospects and update costings based on latest prices whilst maintaining previous revisions.

Ensure Maximum Profitability Across all Quoted Items

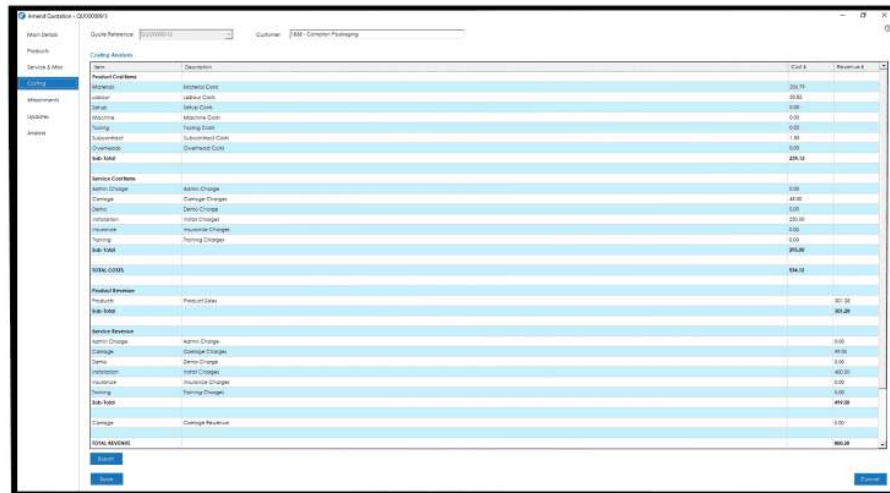
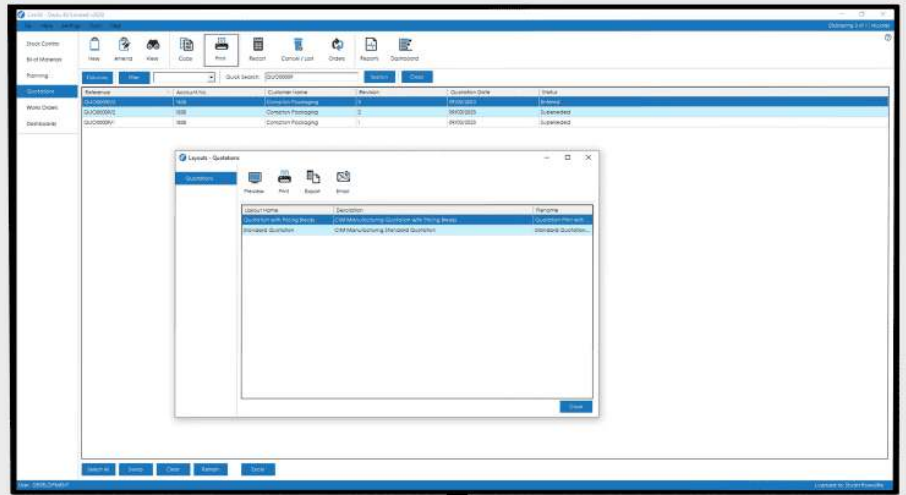
Broken down by material, labour, machine, overheads and subcontract, utilise full visibility of costs, revenue and expected profit margin.

Maintain Sales Prices and Quantity Breaks For Flexibility

Automatically calculate sales prices for quoted items based on cost mark-up, profit margin or on a fixed price basis and price for multiple quantities.

Documentation

Produce eye-catching quotation documents that incorporate your branding, with the fully customisable layouts that can be setup to suit your business needs.



Profit & Loss

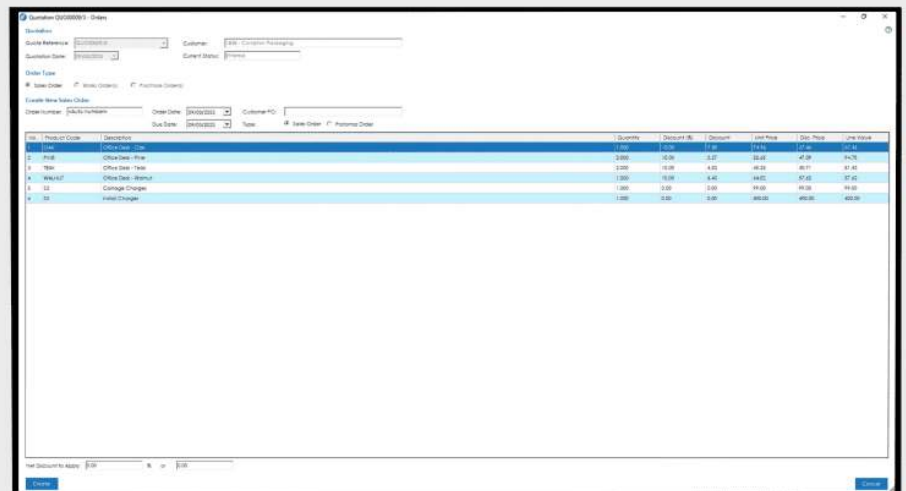
A detailed profit and loss analysis is available on every quote, broken down by material, labour, machine, overhead and subcontract costs.

Giving you full visibility of your costs, revenue and expected profit margin.

Order Processing

When a customer accepts a quotation, you can move on to the next step by raising sales, purchase and works orders directly from the quotation, to the exact specification defined on the quote.

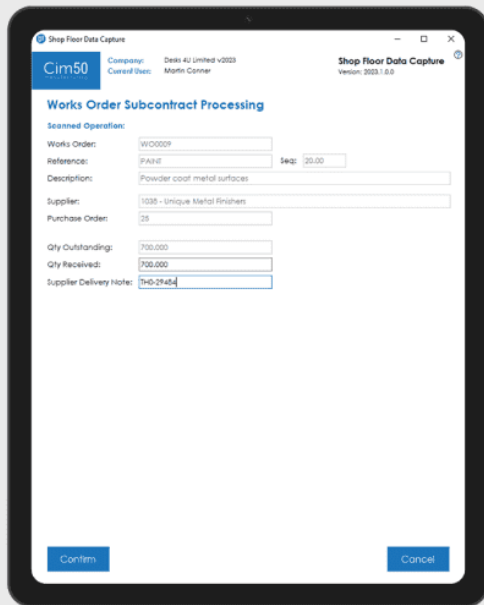
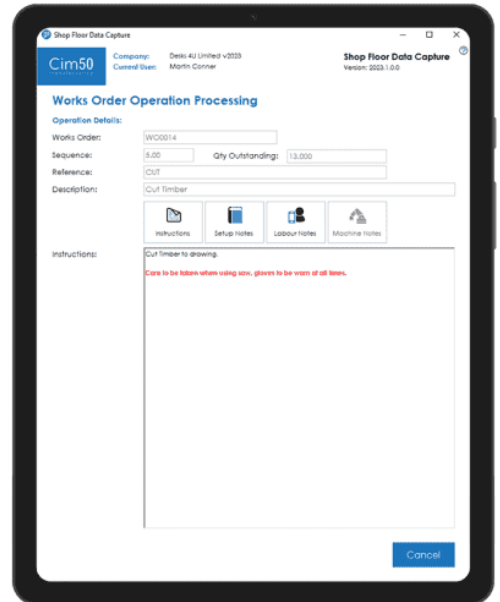
Alternatively, convert the quote to a sales order and let Cim50's Planning module take care of the rest.



Operation Processing

View on-screen job sheets and capture works order operational time either in real time or retrospectively.

Automate processes on key milestones, such as issuing material stock or completing finished items into stock.



Subcontract

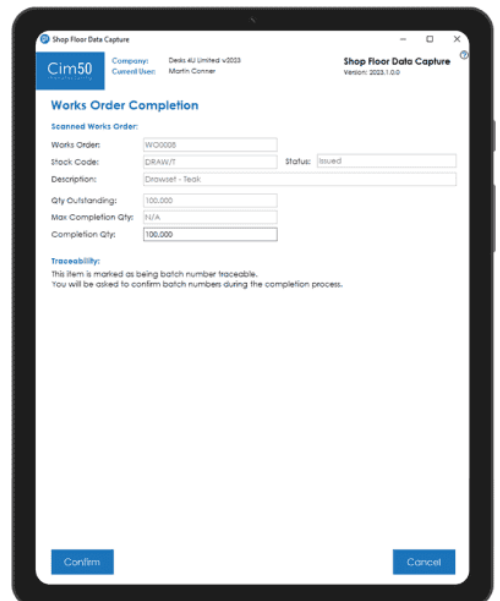
Process subcontract orders via Shop Floor Data Capture.

Despatch items requiring outside processing to the subcontractor, then receipt them back into work in progress once the subcontract work has been completed.

Works Order Completion

Book finished items into stock quickly and efficiently to update built item stock in real time.

Scan your job sheet barcode, enter the quantity you're completing and confirm.



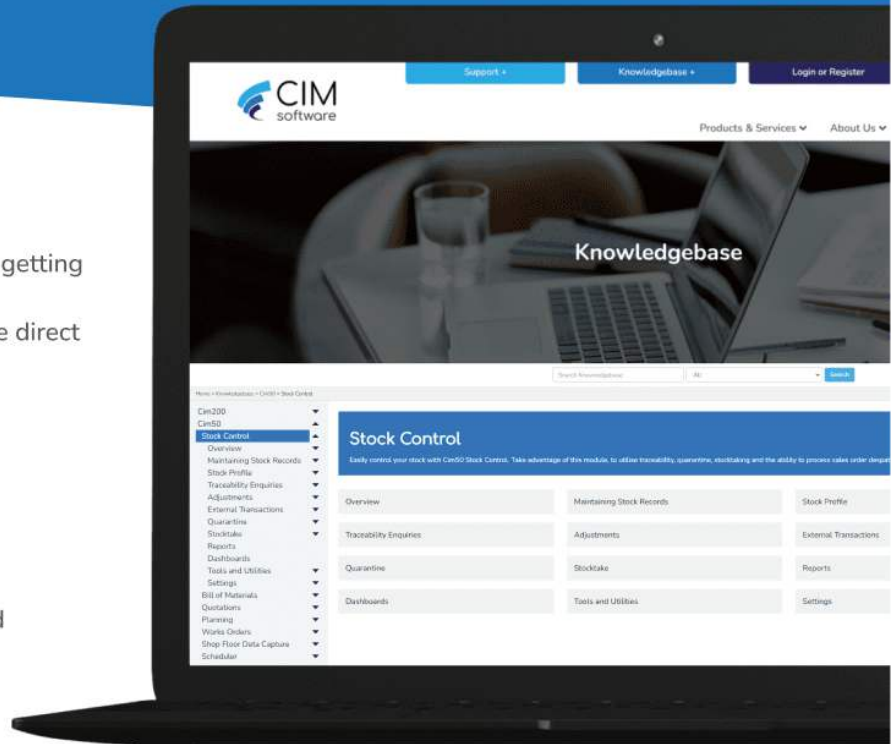
Cim50 Support & Training

Cim50 Support Channels

If you've got a question or query about your system, getting hold of your support team shouldn't be difficult or complicated. All Cim50 Business Partners offer three direct options for getting support:

- Raising a ticket on our website
- Calling our office directly
- Emailing our support team

The CIM Software website also has a thorough Knowledgebase that outlines all of the modules and features within Cim50.



Cim50 Training

In order to get the most out of your software it's crucial that your team knows how to use it.

All Cim50 consultants are experienced at delivering high quality training sessions and will work with you to create a plan that works for your business.

We understand that not every business works in the same way and not every individual learns in the same way. That's why, depending on what works best for you and your team, Cim50 Business Partners are happy to provide the following training options:

At Their Site

If you don't have the facilities or space to carry out training, you can request your sessions take place at your BP's site.

Online

A new way of working. For those who prefer short bursts of learning training can be provided via video calls.

At Your Site

If you've got a large team or don't want to travel, your BP can visit your site for in-person training sessions.

Who are CIM Software?

CIM Software are Manufacturing Software Developers and IT Specialists based in Southampton, Hampshire.

We've been **trusted for over 30 years to deliver simple and effective IT solutions** to hundreds of SME customers across the UK and worldwide.

Specialising in Sage Accounts and Manufacturing solutions, we are a Sage Independent Software Vendor, having **developed our own manufacturing solutions including Cim50 for Sage 50 Accounts and Cim200 for Sage 200.**

With a **combined total of 120+ years worth of manufacturing industry experience**, your business is in safe hands with CIM.



1991

CIM Services is founded.
We started operating from our office in Totton, Southampton and became Swan Manufacturing & Sage Line 100 business partners.

2003

Sage 50 Manufacturing
Sage releases Sage 50 Manufacturing which is quickly added to our product portfolio.

2012

Sage Manufacturing Partner of the Year Awards
CIM Services awarded Sage Manufacturing Partner of the Year every year except for 2 from 2003-2012. These awards ceased in 2013.

2017

CIM Software Ltd created
CIM Software was incorporated in January 2017 for the purposes of reselling our Cim50 Manufacturing software.

2017

Cim50 Manufacturing Software released
After 3 years of design and development, Cim50 was released to 3 beta testing sites.

2019

Cim200 development began
Following the success of Cim50 Manufacturing, we began developing Cim200 Manufacturing for Sage 200 in 2019.

2020

Sage ISV Agreement 
CIM Software enter a partnership agreement with Sage, becoming a Sage Tech Partner Plus and Cim50 becomes the recommended replacement for Sage 50 Manufacturing.

2021

Sage Innovation Award 
CIM Software wins 'Sage Solution Innovation Partner of the Year, 2021' for our Cim50 Carbon Footprint Calculator

2022

Cim200 Manufacturing Software released
Cim200 was released to the market in January 2022, incorporating functionality from both Sage 200 Manufacturing, INFOR:Swan Manufacturing and Cim50.

Item Reference	Description	Type	Default Costing Quantity	Unit Cost
DRARUM	Drawer - Mahogany	Sub-Assembly	100.000	21.70
DRARVD	Drawer - Oak	Sub-Assembly	100.000	18.41
DRARVF	Drawer - Pine	Sub-Assembly	100.000	15.28
DRARVT	Drawer - Teak	Sub-Assembly	100.000	19.61
DRARW	Drawer - Walnut	Sub-Assembly	100.000	19.82
DRARWS	Universal Plywood Drawer Box	Sub-Assembly	400.000	0.38
LEG	Desk Leg Assembly	Sub-Assembly	400.000	3.80
MAH	Office Desk - Mahogany	Finished Goods	100.000	24.88
MAHDEC	Executive Desk - Mahogany	Finished Goods	100.000	72.10
OAK	Office Desk - Oak	Finished Goods	100.000	24.48
OAKDEC	Executive Desk - Oak	Finished Goods	100.000	80.19
PINE	Office Desk - Pine	Finished Goods	100.000	45.80
PINEDEC	Executive Desk - Pine	Finished Goods	100.000	37.05
SBCT	Small Business Customised Pack	Finished Goods	100.000	104.09
TEAK	Office Desk - Teak	Finished Goods	100.000	33.97
TOPM	Desktop - Mahogany	Sub-Assembly	100.000	24.32
TOPO	Desktop - Oak	Sub-Assembly	100.000	17.98
TOPP	Desktop - Pine	Sub-Assembly	100.000	17.74
TOPT	Desktop - Teak	Sub-Assembly	100.000	17.43
TOPW	Desktop - Walnut	Sub-Assembly	100.000	23.94
WALDEC	Executive Desk - Walnut	Finished Goods	100.000	40.48
WALUT	Office Desk - Walnut	Finished Goods	100.000	40.48

Sage Tech Partner
Plus

Get in Touch

If you are interested in finding out more, please contact us on **01525 243490** or email **info@qil.co.uk**.

